



Helping Those Who Help Patients

ORDERING IS EASY!
Online: www.PathSUPPLY.com
Email: Orders@PathSUPPLY.com
Phone: 800-631-3556



1st & 2nd Quarter 2026 New Products

Precise Coverslipping Tape™ -Item # ES33760



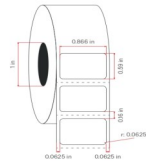
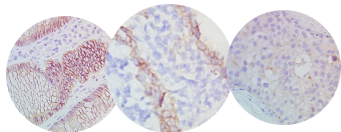
- ◆ Equal to other high end TAC films & archive film
- ◆ Manufactured in clean room conditions
- ◆ High transparency allows end user vivid visual impression of sample under microscope
- ◆ Samples available



Box 25 = \$ 299 EA
Box 100 = \$ 659.00 EA

Claudin 4 IHC Control Slide– Item #10-IHC.CD4

CD4 Control Slides FFPE Human Tissue, high quality, white glass, charged slides for use on all IHC Stainers –Available in quantities of (25) & (100)



IHC Slide Labels for Cognitive & Zebra Printers

| | | |
|-----------------------------|---|-------------------|
| **NEW** PS7011-C | For use on Cognitive Printer | \$ 195.00 / Roll |
| **NEW** PS7011-C-RIB | Ribbon for use on PS7001-C | \$ 59.99 / Ribbon |
| PS7001 | For use on Zebra Printer | \$ 285.00 / Roll |
| PS7001-RIB | For use with PS7001-IHC Chemical Resistant Labels | \$ 59.99 / Roll |

Aqua Washdown Scales



- ◆ Designed for durability/IP67 rating ensures dust tight unit
- ◆ Weight Capacities 9 LB, 18 LB, 35 LB & 70 LB
- ◆ Can withstand temporary immersion in water
- ◆ Precision load technology / Simple check weighing
- ◆ 20MM high digit front & rear displays enhance visibility
- ◆ Power supplied by AC adapter or rechargeable battery/Auto

Cadaver Transport Carrier - Scissor Lift **COMBO**

Item # CTC-LIFT



Shown with optional privacy frame & cover

- ◆ 2-in-1 Design combines a cadaver transport cart and a scissor lift into a single, seamless unit = improved workflow and safety
- ◆ Optimal Lift Range: Effortlessly raises and lowers from 19" to 78"
- ◆ Robust Capacity-safely handles up to 800 lbs
- ◆ Superior Maneuverability/Multi-Directional Top
- ◆ Integrated Safety Rails help prevent accidents/Durable construction

Order online: www.pathsupply.com Order via email: orders@pathsupply.com Order by phone: 800-631-3556



Helping Those Who Help Patients

ORDERING IS EASY!
Online: www.PathSUPPLY.com
Email: Orders@PathSUPPLY.com
Phone: 800-631-3556



1st & 2nd Quarter 2026 Sale Products

Instrument Filters

| Item # | Description | Pricing |
|---------------------|---|--------------|
| THRM-0610F | Thermo XY Slide Stainer/Varistain Gemini Charcoal- | \$ 141.00 EA |
| THRM-8600F | Thermo Filter Gross Lab Fume Hood Station 8600 | \$ 140.00 EA |
| THRM-FSET | Thermo Grossing Lab Filter Set (2 Mev8, 2 Formaldehyde) | \$ 906.00 EA |
| FILTER-AF002 | AirFiltronix Ductless Fume Hoods Activated Carbon | \$ 225.00 EA |
| FILTER-AS030F | PURAIR HEPA Ductless Fume Hood | \$ 298.00 EA |
| FILTER-AS-AP60-001F | PURAIR Carbon - Ductless Fume Hood | \$ 141.00 EA |
| FILTER-AS-AP60-013F | PURAIR Formaldehyde - Ductless Fume Hood | \$ 164.00EA |
| FILTER-AS-AP60-PRFF | PURAIR Pre-Filter - Ductless Fume Hood | \$ 99.00 EA |
| FILTER-AS-ASTS-013F | PURAIR Formaldehyde - Ductless Fume Hood | \$ 302.00 EA |
| FILTER-AS-ASTS-PRFF | PURAIR Pre-Filter Ductless Fume Hood | \$ 136.00 EA |
| FILTER-ASTS-001F | PURAIR Carbon - Ductless Fume Hood | \$ 241.00 EA |
| FILTER-INTL-300F | 300F Charcoal Filter | \$ 320.00 EA |
| FILTER-LABC1300F | Labconco Fume Hood Filter, Charcoal | \$ 485.00 EA |
| FILTER-LABC1301F | Labconco Fume Hood Filter, Formaldehyde | \$ 485.00 EA |
| FILTER-LC010 | A/C Filter for Labconco | \$ 525.00 EA |
| FILTER-LE006 | Peloris Filter | \$ 218.00 EA |
| FILTER-LE001 | A/C Filter- For Leica Autostainers (ST4040, ST5010 & ST5020), | \$ 88.00 EA |

Bone Band Saw Blades-for IMEB Bone Band Saw

| | | |
|--------|---|---|
| SF301 | Saw Blade with Standard Teeth for use with IMEB Bone Band Saw | \$ 99/Blade <i>\$ 89/Blade when ordering three or more</i> |
| SH303 | Saw Blade with Heavy Duty Teeth for use with IMEB Bone Band Saw | \$ 99/Blade <i>\$ 89/Blade when ordering three or more</i> |
| SFD532 | Saw Blade with Fine Teeth for use with IMEB Bone Band Saw Item# BBS-82203 | \$ 99/Blade <i>\$ 89/Blade when ordering three or more</i> |
| SD311 | Saw Blade Diamond for Use with Bone Band Saw Item# BBS-82203 | \$ 299/Blade <i>\$ 235/Blade when buying three or more</i> |

Double Frosted Slides Item #10999Frosted

- ◆ Double Frosting on both sides so you always know which end is up
- ◆ Frosting allows slides to adhere better or the use of pencil



\$ 49.00/CS

DynaPlus Nitrile Exam Gloves (Powder Free)



\$ 134.00/CS



Item #'s 2515 (XS), 2516 (S), 2517 (M), 2518 (L), 2519 (XL)
Gloves feature textured fingertips and 3 mil thickness
Available in 2,000/CS (except XL = 1,800/CS)



Order online: www.pathsupply.com Order via email: orders@pathsupply.com Order by phone: 800-631-3556